

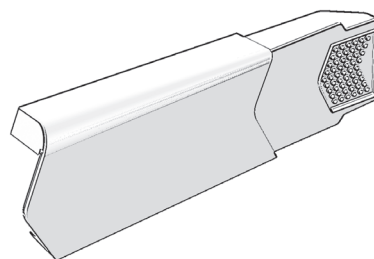
Description:

The Manthorpe Interlocking Dry Verge System is a fast and effective method for finishing the verge of a concrete tiled roof.

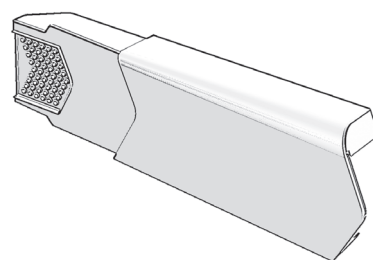
The Dry Verge System is compatible with almost every make and profile of concrete interlocking tiles and is completely maintenance free. The system can be mechanically fixed in all weather conditions without the need for mortar.

The Angled or Round Ridge End Cap can be used to protect the end of the ridge while the Eaves Closure seals the base of the verge preventing access for birds and large insects.

The sleek appearance of the product maintains the stepped appearance of the verge while remaining unobtrusive to the original roof design.



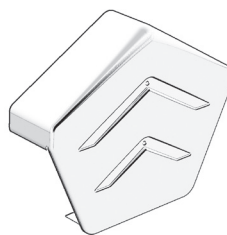
RH Dry Verge Unit (Code: GDV-RH)



LH Dry Verge Unit (Code: GDV-LH)

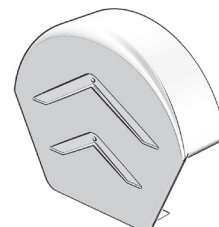
Features:

- Easy to fix and maintenance free.
- Suits most makes and profiles of concrete interlocking tiles that have a batten gauge between 280mm and 345mm.
- Mortar-free solution allows for installation in all weather conditions.
- Prevents entry of birds and large insects.
- Suitable for new build or refurbishment situations on roofs of 15° to 55° pitch.
- Complies with BS 5534 requirements for mechanical fixing.



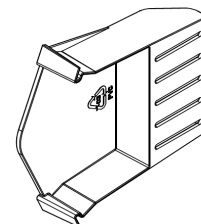
Angled Ridge End Cap (Code: GDV-END-A)

Round Ridge End Cap (Code: GDV-END-R)



Eaves Closure (Code: GDV-EC)

Rebated Eaves Closure (Code: GDV-REC)



BS 8612 Specifications

- Independently tested to conform with the requirements of BS 8612.
- Performance data for the tests conducted on this product is available upon request.

MANTHORPE BUILDING PRODUCTS LTD
MANTHORPE HOUSE
BRITAIN DRIVE
CODNOR GATE BUSINESS PARK
RIPLEY
DERBYSHIRE DE5 3ND

TEL: 01773 303 000
FAX: 01773 303 300
EMAIL: mbp.care@manthorpebp.co.uk
WEB: www.manthorpebp.co.uk

DRAWN	ISSUE DRAWN
R.P. 14.02.05	B.H. 18/12/2024

The company maintains a policy of continuous development of its product range and reserves the right to amend the specification without notice.

DRG No

MBP 8225

Issue

05