

SmartVerge® Dry Verge System - Eaves Closure Units

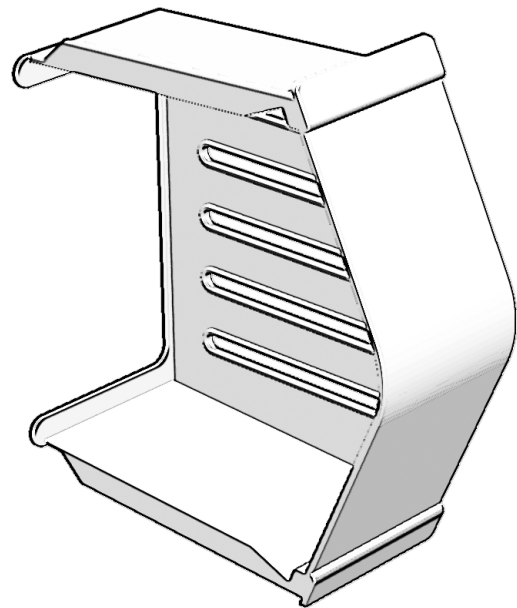
Code: **GDV-EC**





### Description:

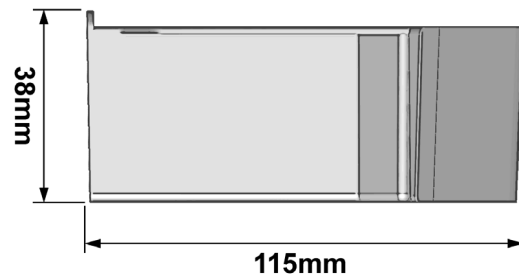
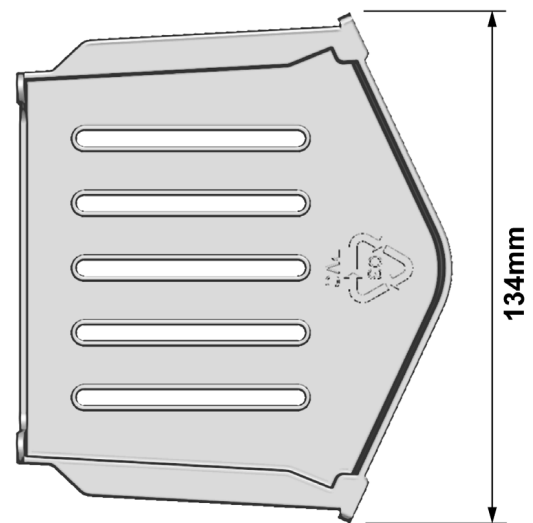
The Manthorpe Eaves Closure Unit prevents the entry of birds and large insects into the building structure through the base of the roof verge.

The GDV-EC Eaves Closure can be nailed into the end of the fascia board. The first Verge Unit is then clipped securely over the Eaves Closure providing a strong foundation for the remainder of the system.

The design is ambidextrous in nature and can be used on both verges of the roof.



PACKING DETAILS	Pack contains 2 Eaves Closure Units, 2 Nails and Fixing Instructions. 20 Packs per Box.
WEIGHT	3kg per Box
MATERIAL	Unplasticized Polyvinyl Chloride (uPVC)
MANUFACTURING PROCESS	Injection Moulded
COLOUR VARIATIONS	Terracotta (TR) 
	Dark Brown (BR) 
	Slate Grey (GR) 
	Black (BL) 



### BS 8612 Specifications

- Independently tested to conform with the requirements of BS 8612.
- Performance data for the tests conducted on this product is available upon request.

MANTHORPE BUILDING PRODUCTS LTD  
MANTHORPE HOUSE  
BRITTAIN DRIVE  
CODNOR GATE BUSINESS PARK  
RIPLEY  
DERBYSHIRE DE5 3ND

TEL: 01773 303 000  
FAX: 01773 303 300  
EMAIL:  
mbp.care@manthorpebp.co.uk  
WEB:  
www.manthorpebp.co.uk

DRAWN	ISSUE DRAWN
R.P. 14.02.05	B.H. 18/12/2024

The company maintains a policy of continuous development of its product range and reserves the right to amend the specification without notice.

DRG No

**MBP 8228**

Issue

**04**